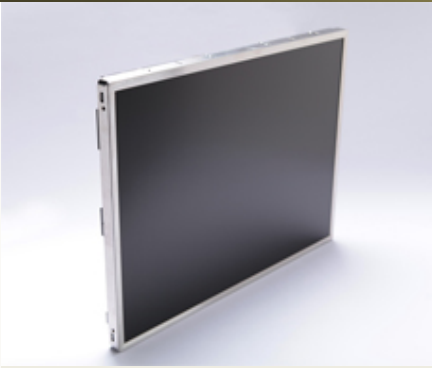


TVD201UXDL



TVD201UXDL is a rugged 20.1" LCD module developed with applications where durability and dependability are critical. We have incorporated our proprietary high-brightness LED backlight into TVD201UXDL to achieve unrivaled power efficiency and superior thermal management characteristics. The quality of our product is backed by years of experience in developing LCD displays for the avionics, industrial, and defense sectors.

FEATURES

- ◆ High Resolution - UXGA
- ◆ High Brightness LED Backlight
- ◆ Thermal Dissipation Technology
- ◆ Fast Response Time
- ◆ High Contrast Ratio
- ◆ Rugged Design
- ◆ Easy Mounting

CONTACT

True Vision Displays, Inc.

16402 BERWYN ROAD
CERRITOS, CA 90703

PHONE 1-562-407-0630

FAX 1-562-407-0631

E-mail sales@TVDLCD.com

Website www.TVDLCD.com



TRUE VISION DISPLAYS, INC.

SPECIFICATIONS

Display	Display Area	408 (H) x 306 (V)	mm
	Pixels	1600 (H) x 1200 (V)	pixels
	Pixel Pitch	0.255 (H) x 0.255 (V)	mm
	Display Color	16.7M	Colors
	Display Mode	Normally White	
	Response Time	5	msec
	Contrast Ratio	800:1	
	Luminance	1,000	cd/m ²
Backlight	Viewing Angle	L/R/U/D = 80/80/80/80	Deg
	Interface	LVDS	
	Light Source	High Bright LED Rails	
Power	Life Time	40,000	Hr
	Connection	Molex 50-37-5023 (2pin Connectors)	
	LCD Power	3.2 (5.0V / 650mA)	W
Environment	Backlight Power	28.8 (12.0V / 2.4A)	W
	Total Power Consumption	32.0	W
	Operating Temperature	0 ~ +50	°C
Mech.	Storage Temperature	-25 ~ +60	°C
	Humidity	90, non-condensing	%
	Shock	50 (11ms, sign wave one time for 3 axis)	G
	Vibration	1.0 (10-300Hz, Sweep rate 10min, 30min for aixs)	G
Option	Outline Dimension	432.0(H) x 331.5(V) x 25.5(D) Max	mm
	Weight	3,100	gram
	Mounting	M3 screw holes (2 holes each side)	
Option	Dimming	0 ~ 100% Dimming with LED Controller	
	Touch Screen	5-Wires Resistive, Scratch Resistant	
	Glass Bonding	Heater / EMI / Low Reflection / Touch	

True Vision Displays, Inc.
Committed to Quality and Environment.

